



**Mental Health as Part of a Comprehensive School Safety
Framework - A Q&A Discussion**

April 2018

A W E B I N A R P R E S E N T A T I O N

Welcome!

- Presentation will be recorded
- A copy of the recording will be sent after the presentation
- Attendees are in listen-only mode
- Please submit questions on the right side of your screen

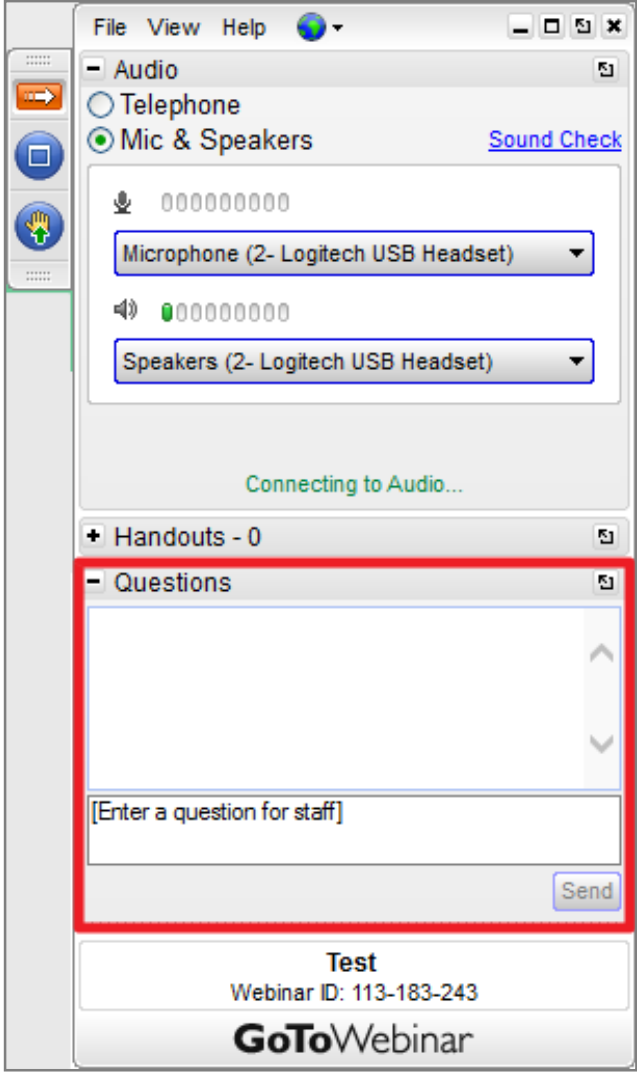
■ Connect with us!



@kognito #Kognitowebinars



Jennifer Spiegler
SVP, Strategic Partnership
Kognito





Conversations that change lives.



- Talk with Virtual Students to build skills, increase self confidence be ready to act
- Used by over 400,000 educators and students in over 11,000 schools
- Portfolio of simulations for K12 professional learning and student curriculum

Kognito is the only company with health simulations listed in SAMHSA's National Registry of Evidence-based Programs and Practices (NREPP).



Today's Presenter

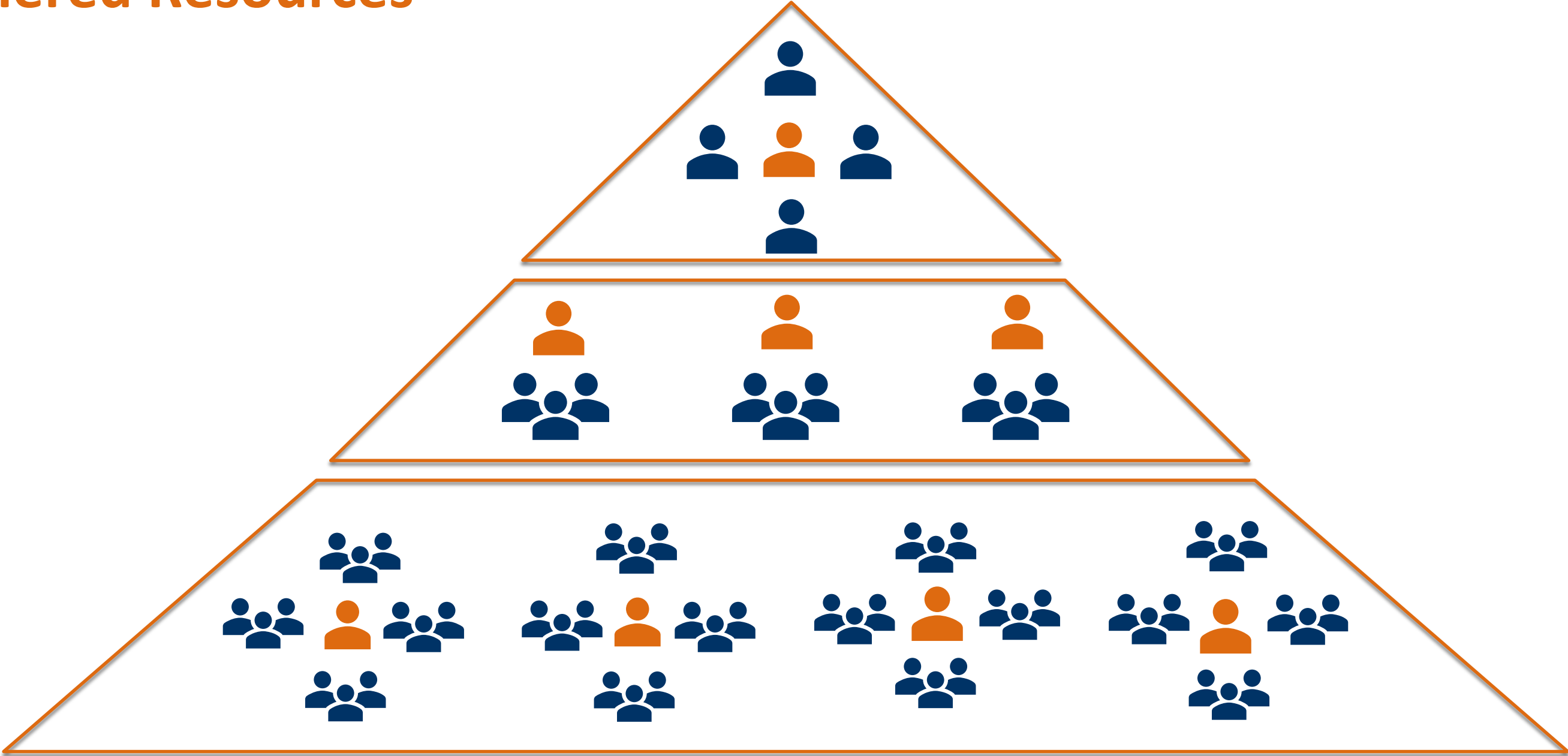


MaryAnn Panarelli, Ed.D.
Director of Intervention and Prevention Services,
Fairfax County Public Schools, Virginia

Implementing an Effective Threat Assessment Plan

- [Threat Assessment in Virginia Public Schools](#): Model Policies, Procedures, and Guidelines.
- Regulation requires and defines core elements of a trained threat assessment team at each school.
- A sample form to guide the assessment can be found on page 34 of the manual at the link above.
- The process also eliminates concerns about transient or non-serious risks, and can reduce suspensions and other exclusionary responses.

Tiered Resources



The Human Safety Net: Preparing Teachers, Staff, and Students

- Threat Assessment is just one part of school safety, which must also include:
 - **C** – Caring and connection to build a positive school climate
 - **A** – Awareness of resources and reporting options
 - **R** – Recognition of (and response to) threats, aberrant and concerning behaviors
 - **E** – Engagement with the community and with persons for whom there is a concern
 - **S** – Support for each other

Topics

1. Where does suicide fit into conversations about school safety?
2. What are the liability issues of doing threat assessment as a school employee?
3. What procedures can be implemented to disseminate information to teachers, parents and the community?
4. How do we as mental health staff advocate for mental health services as part of the budget for school safety?

Q&A



MaryAnn Panarelli, Ed.D.
Director of Intervention and Prevention Services,
Fairfax County Public Schools, Virginia
mmpanarelli@fcps.edu